



# RACHEL

星女郎 | 瑞秋



176

85

60

89

39

FALL & WINTER  
COLLECTION

I tessuti per capospalla sono  
voluminosi ma leggeri.



Through sensible [exclusive site](#)





www.cfmagency.net  
T. 86 755 23774260



W all eyes turn to experience heart, we can really get a look.  
In 2017, the "Jed" model like to take clothes to "open", "Feel something like  
normal mapping" (very complex integration) scenario. In fact, to the degree, the situation of  
the United States can not be separated from the background environment. This is an



The trend of winter  
and autumn, the  
feeling of the model

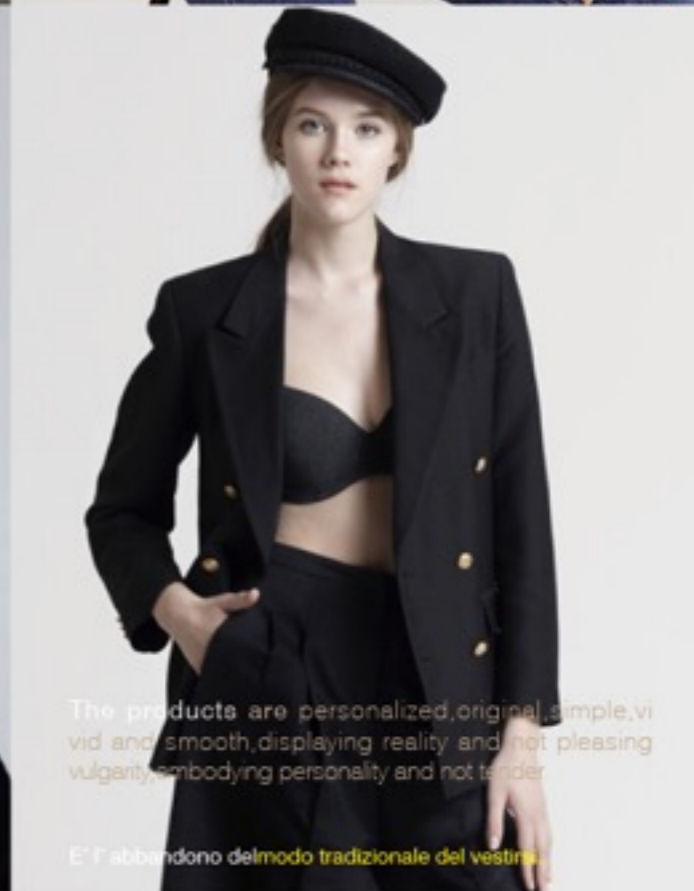


scampers

We fly with passion after first flying-off.



TH.SONG 唯颂



The products are personalized, original, simple, vi-  
vid and smooth, displaying reality and not pleasing  
vulgarity, embodying personality and not tender.

E' l' abbandono del modo tradizionale del vestire.

CFM 星印象

Lvgem Chanson, Minzhi Avenue  
Longhua New District, SHENZHEN

www.chicfacemodels.com  
T. +86 755 23774260

Emily +86 189 2645 2045  
QQ 8008 22 080



# RACHEL

星女郎 | 瑞秋



176

85

60

89

39







CFM 星印象

Lvgem Chanson, Minzhi Avenue  
Longhua New District, SHENZHEN

www.chicfacemodels.com  
T. +86 755 23774260

Emily +86 189 2645 2045  
QQ 8008 22 080